

How to reach Casa dell'Ava

The closest airports are at Milan. Choose from Linate or Malpensa airport or Bergamo airport (Orio al serio). It takes about 90mins to reach the house (a couple of hours from Malpensa).

The fast route is to take the ss36 dual carriageway from Lecco to Colico along the East shore of Lake Como, through an amazing series of tunnels. **The scenic route** is to go up the west shore of the lake from Como on a road that clings to the side of the hill.

We are big fans of Lake Como and we often **stop at Bellano or Varenna for a lakeside pizza**. You can also take the **car ferry across Lake Como** from Varenna to Menaggio - journey is stunning. You can also **call in at Villa Carlotta** if you want a break.



Directions

Pianazzola is car free. The car park is above the village and you then walk down a series of steps to the house. Follow these directions using Google Maps, or the What3Words app

Pianazzola Car park	https://maps.app.goo.gl/PwEJX5jpJCeKqYYG7 https://w3w.co/minus.square.reviewers
Casa dell'Ava	https://maps.app.goo.gl/nLPL2ShxGXPZYU3K8 https://w3w.co/mirage.unless.goatees
Walking directions from Car Park to Casa dell'Ava	https://maps.app.goo.gl/c65yNGf7Kh21Rw19A

Photos of how to get to Casa dell' Ava from the road (about 200m)

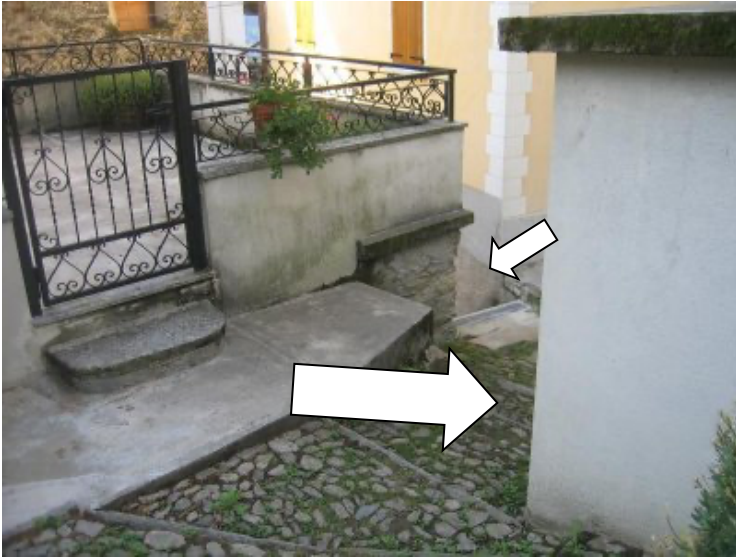


Walk down the wide path in front of the **Pianazzola town sign**



The steps are wide and cobbled





Go down the steep steps and turn right



Here you are!